



Empowered to Live Well

ANNUAL REPORT 2023

***Our Mission:
“To lead South Milwaukee
& St. Francis in making
informed choices through
education and
prevention.”***



TABLE OF CONTENTS

2023 Highlights.....	03
Vital Statistics.....	05
Foundational Capabilities Reference.....	06
Assessment & Surveillance.....	07
Community Partnership Development.....	08
Policy Development & Support.....	09
Organizational Competencies.....	10
Accountability & Performance.....	11
Emergency Preparedness.....	12
Equity.....	13
Communications.....	14
Foundational Areas Reference.....	15
Communicable Disease Control.....	16
Communicable Disease Numbers.....	17
Chronic Disease & Injury Prevention.....	18
Environmental Public Health.....	19
Maternal, Child & Family Health.....	20
Access to & Linkage with Care.....	21
Community Health Improvement Plan.....	22
Budget.....	24
Health Department Team.....	25
Contact Us.....	26

2023 HIGHLIGHTS



HEALTH CARE HERO AWARD

Public Health Administrator, Jacqueline Ove, was granted the First District Health Care Hero Award in October by Congressman Bryan Steil. This award honors people who have worked in the health care industry and have extraordinary talent, compassion, and devotion. The recipients are recognized for their contributions to community service, innovation, leadership, patient care, and other areas that largely influence the provision of health care.

By bringing attention to the achievements of these frequently overlooked health care individuals, the awards encourage others to follow in their footsteps.



2023 HIGHLIGHTS CONTINUED



Stepping On is researched based and is proven to reduce the risk of falls by 31%!

STEPPING ON FALLS PREVENTION WORKSHOP

In 2023, two workshops were held for the evidence-based fall prevention program, Stepping On. Each workshop had seven classes total, and participants learned safety precautions to reduce their risk of falling, practiced strength and balance exercises, and learned how to get up if a fall occurs.

The workshops had many guest speakers that volunteered their time to share advice and educational information from their professional field of work. Speakers that were present in the sessions included:

Pharmacists

Leigh Ann Beyer (Kohl's Employee Pharmacy)
Brian Bock (Good Rx)

Physical Therapists

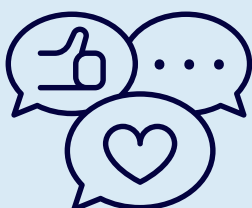
Savannah Gutsch
Beth Zierke (Cora Physical Therapy)

South Milwaukee Fire

Chief John Litchford
Captain Craig Boschke
Captain John Frost
Lieutenant Nathan Fager

Vision

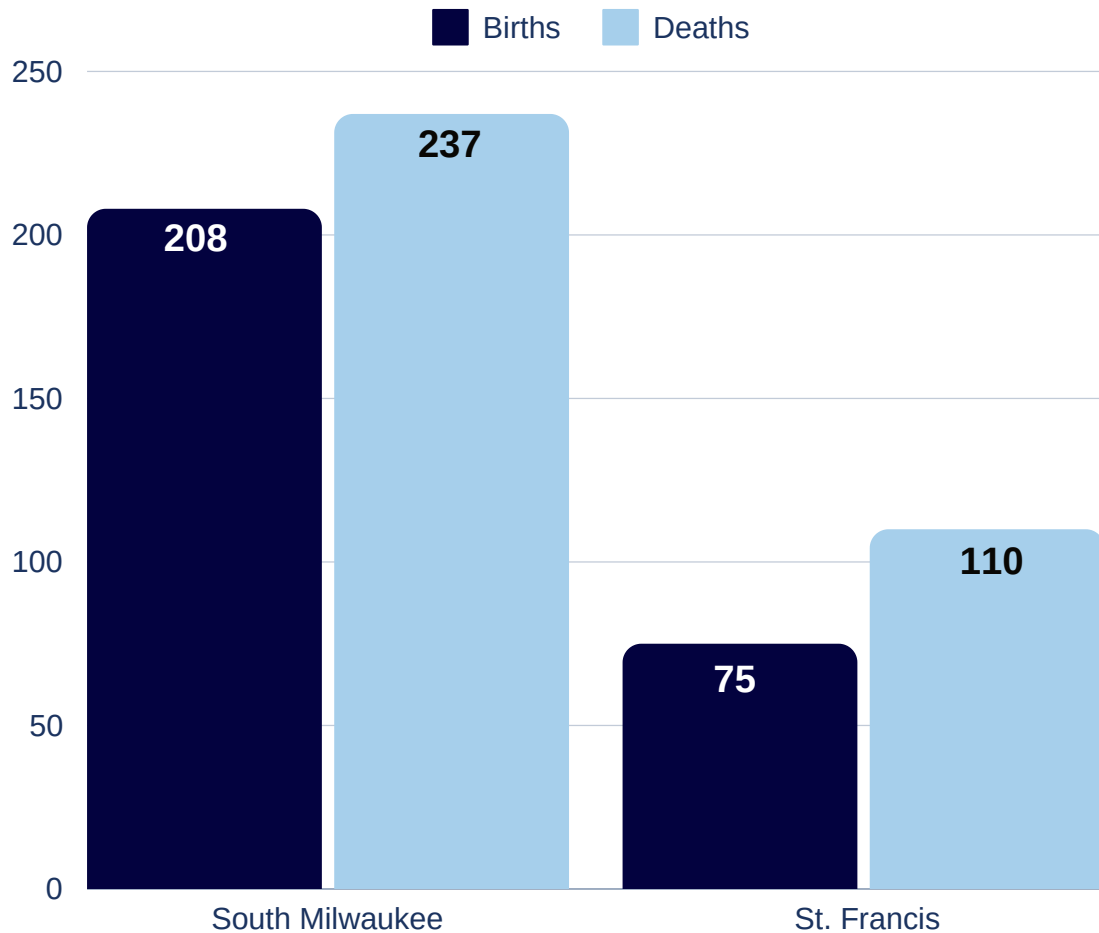
Rose Visser (Vision Forward)



FEEDBACK FROM PARTICIPANTS:

"Not only valuable, enjoyable!"
"This was an awesome program. I am recommending it to others."

VITAL STATISTICS



Top Five Causes of Death

South Milwaukee

1. Heart Disease
2. Cancer Related Deaths
3. Dementia
4. Other Causes
5. Sepsis

St. Francis

1. Cancer Related Deaths
2. Heart Disease
3. Cerebrovascular Disease
4. Respiratory Failure
5. Suicide

FOUNDATIONAL CAPABILITIES & TEN ESSENTIAL SERVICES REFERENCE

Public health infrastructure consists of Foundational Capabilities that are the cross-cutting skills and capacities needed to support basic public health protections, programs, and activities key to ensuring community health, wellbeing and achieving equitable outcomes. There are eight Foundational Capabilities that are needed in Public Health Infrastructure:

Assessment & Surveillance

- Assess and monitor population health
- Address health problems that affect the community
- Assess disparities in disease distribution and health determinants

Community Partnerships

- Establish strategic relationships with key community groups
- Foster partnerships, strength, and support

Policy Development & Support

- Creating and implementing policies that impact community health
- Establish trust and engage with impacted communities
- Involve community members in health improvement planning

Equity

- Enable equitable access to services
- Conduct collaborative health assessments to identify disparities
- Support community-led data processes to address health inequities

Accountability & Performance

- Maintain standards in accordance with laws and policies
- Implement performance management systems
- Foster a culture of quality improvement

Communications

- Utilize social media for community engagement
- Tailor communications for diverse audiences
- Educate and inform

Organizational Competencies

- Allocated resources for equity
- Cultivate a diverse workforce
- Leadership and governance

Emergency Preparedness

- Lead emergency response efforts
- Develop, exercise, and maintain strategies for various emergencies
- Issue and enforce emergency health orders as necessary
- Ensure access to resource for emergency and recovery responses

ASSESSMENT & SURVEILLANCE



Data was used to inform those on social media of the high number of chlamydia cases in the City of South Milwaukee.

SURVEILLANCE OF COMMUNICABLE DISEASE

The SMSFHD actively monitors, investigates, and addresses communicable diseases and environmental health hazards within our jurisdictions. Cases are reported to us through a statewide electronic reporting system as well as by residents and our community partners such as the Police and Fire Departments, long-term care facilities, healthcare facilities, schools, and childcare centers.

Prompt reporting allows a quick response from the Health Department to investigate and contain the health issue.

We also have the ability to use the Wisconsin State Lab of Hygiene, if needed, for fast and accurate results of some communicable diseases. This lab can test for certain illness that some commercial labs are not able to process.

OTHER SOURCES OF DATA

Additional health information and inequities are discovered through the Community Health Assessment, focus groups, birth reports, and death reports. The information gathered helps us develop our Community Health Improvement Plan. Programming and health education is also better tailored and focuses on the needs and health inequities specific to our communities.

COMMUNITY PARTNERSHIP DEVELOPMENT

SOUTH SHORE CARES

The Cudahy, Oak Creek, and South Milwaukee/St. Francis Health Departments continued to grow the CARES initiative, which stands for Community, Access, Resources, Education and Support. The overall aims are to reduce substance use, promote mental health, and provide resources to community members in the South Shore Region of Milwaukee County.



2023 HIGHLIGHTS:

- Began partner meetings
- Started hosting monthly Narcan trainings in each community
- Developed and published the website (southshorecares.org) to promote the initiative and link resources

OTHER NOTABLE PARTNERSHIPS

- Safe Kids
- Bucyrus Club
- Friends of Grant Park
- Community Advocates
- South Milwaukee Lions Club
- Community Medical Services
- Milwaukee Health Care Partnership
- South Milwaukee & St. Francis DPW
- South Milwaukee Trinity Lutheran Church
- South Shore Overdose Fatality Review Team
- South Milwaukee & St. Francis Public Libraries
- South Milwaukee & St. Francis School Districts
- South Milwaukee Water and Wastewater Utilities
- South Milwaukee & St. Francis Fire Departments
- South Milwaukee & St. Francis Police Departments
- Wisconsin Department of Health Services (WI DHS)
- Milwaukee County Aging and Disability Resource Center
- Healthcare Emergency Readiness Coalition (HERC) Region 7
- Wisconsin Department of Agriculture, Trade & Consumer Protection (WI DATCP)



**HEALTHY
COMMUNITY
PARTNERSHIP**

COMMUNITY COALITION

The South Milwaukee/St. Francis Healthy Community Partnership is the coalition in South Milwaukee and St. Francis dedicated to improving the health of the communities. In 2023, the coalition convened in-person for the Spring and Fall meetings. Together, they decided on a logo, developed mission and vision statements, and brainstormed ideas for future community events.



POLICY DEVELOPMENT & SUPPORT



POLICY ADVOCACY

- In 2023, the South Milwaukee/St. Francis Health Department sustained membership and support in the RISE Drug Free MKE coalition (formerly MCSAP) as they rebranded and launched. RISE Drug Free MKE prioritizes policies, practices, and programs that address major substance use issues in the community, including marijuana use among youth, problematic drinking, and prescription drug (mis)use
- In November of 2023, the State Legislators proposed an Assembly Bill (AB 685) that would require local governments to allow the keeping of up to four chickens, geese, ducks, quail or guinea fowl by property owners. The Health Department in coordination with Milwaukee Area Domestic Animal Control Commission (MADACC) advocated to keep local municipal control with regards to the allowance and regulation of animals

POLICY COMPLIANCE

- Effectively facilitated compliance with municipal code regarding Dangerous Dogs.
 - Held trial in accordance to policy with the City Attorney and Board of Health
- Continuously served as a resource to our schools, childcare providers, city businesses, and other partners regarding their health and wellness policies.



ORGANIZATIONAL COMPETENCIES



WORKFORCE DEVELOPMENT

Continuous workforce development is essential to effectively implement public health services.

Staff trained on topics of:

- Trauma Informed Care
- Visby Medical
- Facilitation
- Mental Health
- Sexual and Reproductive Health
- Communicable Diseases
- Substance Misuse
- Public Health Policy
- Re-certification of
 - CPR
 - Vaccines for Children (VFC)

OTHER ORGANIZATIONAL COMPETENCIES

Other organizational competencies examples include:

- City attorney utilized for legal review of lactation support program consent
- Monthly staff meetings to plan for implementation of public health initiatives
- Securing grants and various funding to support public health programs
- Assessed staff training technology needs

STATEWIDE ASSESSMENTS

To address ongoing needs for public health infrastructure, Wisconsin Department of Health Services (WI DHS) asked local and tribal health departments to complete two different assessments. The first was regarding how public health is funded and was completed by our Public Health Administrator. The second assessment focused on workforce development; all 10 staff members completed the workforce survey!

TRAINING SPOTLIGHT



One of our Public Health Nurses attended the NACCHO Preparedness Summit. This national conference provided training on community preparedness for any disaster. It also focused on ways to engage partners to help the community during a disaster to make sure we are providing equitable services during an emergency.

ACCOUNTABILITY & PERFORMANCE

PERFORMANCE MANAGEMENT

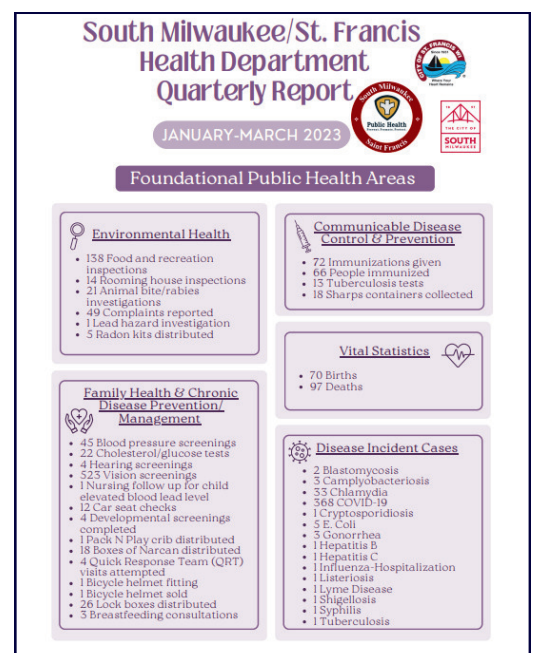
Utilized the performance management system VMSG (Vision, Mission, Services, Goals) to track the department's goals and objectives related to the Community Health Improvement Plan (CHIP) and the Strategic Plan. Monthly updates were provided on objectives such as creating a quarterly newsletter!



QUARTERLY NEWSLETTERS AND REPORTS



This newsletter template was developed in 2023 and was sent out quarterly for community members to read about upcoming events, highlight staff accomplishments, and promote available services. In order to streamline the process, a sign-up was published on the website so the newsletter could be delivered straight to community member's email inbox.



Similarly, four quarterly reports were created and published to the health department's website, developed from the daily "Day Sheets" staff keeps track of to fully capture the work of the health department as a whole.

EMERGENCY PREPAREDNESS



EXERCISING PLANS

Worked with health departments from Waukesha, Milwaukee, Cudahy and Oak Creek, HERC Region 7, WI DHS, NACCHO, and CDC to plan and host a Community Reception Center (CRC) radiological tabletop exercise. We utilized This is a T.E.S.T. game that was developed by the CDC. The exercise brought together different organizations who would respond to a radiological incident to begin planning for this type of emergency.

COMMUNITY NIGHT OUT

Worked with a nursing student to develop materials to teach residents how to be prepared for the first 72 hours of an emergency by making a personal emergency kit. Residents received a flashlight as a way to start building their kit.



EXTREME HEAT

With a grant from WI DHS, the South Shore health departments collaborated on an extreme heat project that included:

- Established MOU's with cooling/warming centers
- Mailed postcards educating about extreme heat .
- Handed out magnets with heat stroke vs. exhaustion warning signs.
- Provided cooling towels at community events.
- Installed signs at parks with warning signs of heat stroke.

PLAN UPDATING

Worked with HERC Region 7 health departments to update the Public Health Emergency Response Plans (PHERP), Job Action Sheets, and Points of Dispensing plans in anticipation of the Republican National Convention (RNC) coming in July 2024.

EQUITY

OUR COMMITMENT TO HEALTH EQUITY

"The South Milwaukee/St. Francis Health Department believes that each and every person has the right to live a full and healthy life. We acknowledge that factors such as race, ethnicity, gender, age, sexual orientation, environment, and socio-economic status play a major role in health status and well-being. We are committed to aligning our values, policies, and practices to eliminate disparities to advance health equity for all South Milwaukee and St. Francis residents. We will do this by integrating health equity into the Health Department, enhancing staff knowledge and skills, and evaluating our methods of communication with equity in mind."

SOUTH SHORE EQUITY IN RECOVERY PROJECT

The SMSF health department, in collaboration with the Oak Creek and Cudahy health departments, continued work on a project to get a better understanding on the impact that COVID-19 had on our communities and especially the most vulnerable populations.

Data Collection from 2022-2023

- 442 community wide surveys
- 3 focus groups with 21 community partners attending
- 31 interviews with residents of Cudahy, Oak Creek, South Milwaukee, & St. Francis



The Community Identified Themes

- 1 Lost in translation:** gaps in communication as it relates to services, programs, and resources. Gaps included language barriers, knowledge of programming/events offered, & media coverage.
- 2 Not meeting basic needs:** expressed difficulty in meeting their basic needs like affordable housing, food insecurity, mental health services, recreation, safety and social connection.
- 3 Trouble accessing services:** accessing services and resources have barriers like transportation, technology, financial, literacy, and proximity.
- 4 New areas of exploration:** the community has ideas to address needs and improve engagement like dental services for low-income, teen health programs, senior services, new moms & breastfeeding courses, and communication techniques/strategies
- 5 Failing to commit to equity:** community members shared lived experiences of discrimination, lack of cultural inclusivity, racism, and stigma; which result from failures at an interpersonal and institutional levels



The health departments hosted Our Community, Our Voice events in each of the four communities. Attendees were invited to walk through to visualize the data, give their feedback, and participate in a community mapping art project that was done in partnership with a local artist named Lauren Marvell.



COMMUNICATIONS

POSTCARDS

You may have noticed one of these postcards in your mailbox in 2023. We saw success with sending out postcards as a way of communicating to every resident in our cities about important health information and events.

DRUG SAFETY AWARENESS

FENTANYL & XYLAZINE

- People who use drugs are at a higher risk of dying as fentanyl is being mixed with xylazine (a tranquilizer meant for large animals)
- From 2020 to 2021, there was a 516% increase in the number of xylazine overdose deaths in the Midwest
- Any pill or drug not from a pharmacy or your doctor could have fentanyl or xylazine

FREE RESOURCES AVAILABLE AT THE HEALTH DEPT:

- **Narcan** to reverse an overdose
- **Fentanyl Test Strips** to test substances
- **Medication lock boxes** to keep prescriptions safe
- **Medication deactivation bags** to dispose of unwanted or expired medications
- **Sharps disposal** & more

LOOKING FOR LOCAL PEER SUPPORT OR TREATMENT?
Community Medical Services can help.
(414) 775-2500

FREE NARCAN TRAININGS

8/24/23 at 4:30 PM St. Francis Public Library 4230 S Nicholson Ave. St. Francis, WI 53235	9/7/23 at 5:30 PM South Milw. Public Library 1907 10th Ave. South Milw, WI 53172
--	---

Light refreshments will be provided. Each participant will receive one free box of Narcan and a \$10 gift card to a local coffee shop!

BE PREPARED!

BE PREPARED FOR EXTREME HEAT

Heat Exhaustion

Know the Warnings Signs:

- Dizziness
- Heavy sweating
- Nausea
- Weakness

Move to cooler area, loosen clothing, and drink water. Seek medical assistance if symptoms do not improve.



Heat Stroke

Know the Warning Signs:

- Confusion
- Dizziness
- Unconsciousness
- Rapid pulse

Move to cooler area, remove extra layers, and cool with ice. Call 911 if you or someone you know exhibits these symptoms.

Those At Greater Risk:



SOCIAL MEDIA

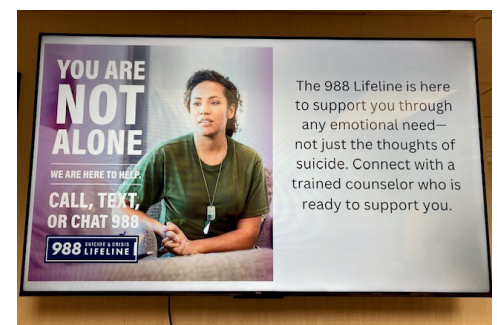


- Used social media to communicate on a variety of public health topics and reached over 43,000 people between Facebook & Instagram.
- Developed and followed a social media plan on specific outreach.
- Utilized a Facebook campaign to promote cooling centers and heat awareness information as part of the heat grant.
- Began a featured Friday post each month to spotlight a staff member that works at the health department so the community could get to know our staff.



OTHER COMMUNICATIONS

- Encouraged sign up for emergency alert notifications.
- Developed and published quarterly newsletters which are available through the city website and Facebook.
- Advertised programming in the South Milwaukee Bridges and St. Francis Mariner Magazines.
- Incorporated texting communication for Lactation Support Services.
- Utilized programmable scrolling sign in both cities to communicate current events, new programs, and upcoming activities.
- Replaced our display board in our lobby with a television that scrolls with different educational materials & event flyers.



FOUNDATIONAL AREAS & TEN ESSENTIAL SERVICES REFERENCE

Public health programs, or Foundational Areas, are basic public health, topic specific programs and services aimed at improving the health of the community. The foundational areas reflect the minimum level of service that should be available in all communities.

There are five Foundational Areas:

Communicable Disease Control

- Provide accurate information to the health care system and community
- Assure the appropriate treatment of individuals who have reportable communicable diseases, such as TB or STIs
- Coordinate communicable disease programs and services

Chronic Disease & Injury Prevention

- Provide accurate information to the health care system and community
- Identify community partners and their capacities
- Develop and implement a prioritized prevention plan
- Coordinate and integrate chronic disease and injury prevention programs and services

Environmental Public Health

- Provide accurate information on environmental public health threats
- Conduct mandated testing, inspections, and oversight to protect food, recreation sites, and drinking water; manage liquid and solid waste streams safely; and identify other public health hazards related to environmental factors

Maternal, Child and Family Health

- Provide accurate information to the health care system and community
- Develop a prioritized prevention plan using life course expertise and an understanding of health disparities
- Coordinate and integrate maternal, child, and family health programs and services

Access to & Linkage with Care

- Provide accurate information to the health care system and community on access and linkage to clinical care (including behavioral health), healthcare system access, quality, and cost
- Identify healthcare partners and competencies, develop prioritized plans for increasing access to healthy homes and quality health care

COMMUNICABLE DISEASE CONTROL

A large portion of staff time was spent working on communicable disease control and prevention to protect the health of the public. Follow up on reportable conditions may include providing education, assuring appropriate treatment was provided and taken, collecting laboratory specimens, isolating and/or identifying and notifying those who were exposed.

LAUNCH OF SEXUAL HEALTH CLINIC

A 2023 highlight was the opening of our Sexual Health Clinic to help combat the rising numbers of sexually transmitted infections. This program was years in the making and we are thrilled to finally be able to offer these services!

Policies, procedures, and a staff training plan were finalized in order to train staff in operating the clinic.



SEXUAL HEALTH CLINIC
NOW AVAILABLE!

Services available for individuals ages 14+ at low or no-cost with Family Planning Only Services (FPOS)
Services by appointment only

- Pregnancy Testing**
- Free male & female condoms** (always available in our lobby!)
- STI Testing & Treatment for:**
 - Chlamydia
 - Gonorrhea
 - Trichomoniasis
- Emergency Contraception available**
- Additional services & resources available**

Located in the Health Department
2424 15th Ave
South Milwaukee, WI 53172

TUBERCULOSIS (TB)

10 Latent TB Infections & 1 active TB Disease

Utilized resources at the State level to ensure individuals diagnosed with tuberculosis infection and disease received appropriate, cost-effective treatment and follow-up testing. Connected clients who did not have insurance to federally qualified health centers.

DISEASE GUIDANCE

Provided communicable disease outbreak guidance to local Long-Term Care Facilities, schools, and childcare centers to help stop the spread of infection. Types of outbreaks that the health department encountered were respiratory outbreaks like COVID-19, Respiratory Syncytial Virus (RSV), and Metapneumovirus.

Guidance was also provided to schools and daycares on diseases like Varicella (chickenpox), hand-foot-and-mouth, and lice.

Provided Support & Guidance for 8 Respiratory Outbreaks

COMMUNICABLE DISEASE NUMBERS

Disease Name	Number of Incidents	
	South Milwaukee	St. Francis
Blastomycosis	2	1
Campylobacteriosis	3	3
Chlamydia Trachomatis Infection	93	35
Carbapenemase Producing Organism-Resistant	1	0
Carbapenemase Producing Organism	1	0
Coccidioidomycosis	1	0
Coronavirus, Novel 2019*	574	260
Coronavirus, Novel 2019-Hospitalizations*	22	2
Cryptosporidiosis	1	1
E-Coli, Enteropathogenic (EPEC)	8	4
E-Coli, Enterotoxigenic (ETEC)	2	2
E-Coli, Shig Toxin-Producing (STEC)	1	0
Giardiasis	1	2
Gonorrhea	20	9
Hepatitis B, Chronic	3	0
Hepatitis B, Acute	2	0
Hepatitis C, Chronic	3	1
Histoplasmosis	1	0
Influenza Associated Hospitalizations	5	3
Listeriosis	1	0
Lyme Disease	4	2
Mycobacterial Disease (Non-Tuberculosis)	11	12
Parapertusis	1	0
Respiratory Syncytial Virus (RSV)- Hospitalizations**	13	4
Salmonellosis	4	2
Shigellosis	1	1
Streptococcal Disease, Invasive, Group A	3	1
Streptococcal Disease, Invasive, Group B	5	5
Streptococcal Pneumoniae	4	0
Syphilis Primary	2	1
Syphilis Secondary	2	2
Syphilis, Unknown or Late	7	0
Toxoplasmosis	1	0
Tuberculosis	1	0
Tuberculosis, Latent Infection (LTBI)	4	6
Typhoid Fever	1	0
Vancomycin-Resistant Enterococci (VRE)	1	0
Varicella (Chickenpox)	3	0

*COVID-19 changed mid-year to requiring reporting of disease if a hospitalization occurs, leading to having a disease category and a hospitalization category.

**RSV Hospitalizations became reportable in on November 1, 2023.

CHRONIC DISEASE & INJURY PREVENTION

CHRONIC DISEASE PREVENTION

Programming to address some of the top causes of deaths of our residents included:

- Educational sessions on brain health were held at local senior living facilities with tips on how to decrease your risk of dementia
- Cholesterol and blood pressure screenings with education were available at our office during weekly clinics
- Additional blood pressure screenings offered monthly at the public libraries and senior center.



INJURY PREVENTION PROGRAMS

Injury prevention efforts focused on:

- Car seat safety
- Safe sleep for infants
- Proper disposal of sharps
- Medication safety lock boxes and medication disposal bags
- Bike helmet fitting, education, and purchase



NARCAN TRAINING

SEPTEMBER 7TH AT 5:30PM

Come to a free training and learn:

- What is an opioid
- The signs of an overdose
- How to use Narcan

No registration needed
One box of Narcan per participant

Light refreshments will be provided. Each participant will receive a \$10 gift card to a local coffee shop

South Milwaukee Public Library
1907 10th Ave, South Milwaukee, WI 53172

More Information
414-768-8055

HARM REDUCTION

Opioid overdoses continued to be a concern, as was the need for harm reduction services to prevent injury from using substances.ocused on communicating the availability of Narcan, Hope Kits (containing fentanyl test strips), and folders consisting of local resources for those who use and/or are affected by substance use.

88
Narcan
Boxes
Distributed

30
Cholesterol &
Glucose
Screenings

181
Used Sharps
Containers
Collected

176
Medication
Lock Boxes
Distributed

35
Bike Helmet
Fittings
Completed

53
Car Seat
Checks
Completed

ENVIRONMENTAL PUBLIC HEALTH



NEW X-RAY FLUORESCENCE GUN

The environmental health program purchased an X-Ray Fluorescence (XRF) Gun which can be used to determine the elemental analysis of materials that it scans. This comes in handy when doing lead inspections. This device helps to cut the lead sampling time by 50% and gives real time results rather than waiting for results from a laboratory.

LEAD INVESTIGATIONS

The health department, per state statute, follows up when a child's blood lead level is $>5 \mu\text{g/dL}$. This includes a home visit looking for potential hazards, a developmental screening, and education. An environmental investigation, where samples from the home are taken to check for lead exposure, occurs when a blood lead level is $>10 \mu\text{g/dL}$. We partner with The South Milwaukee Water Utility to check water samples for lead when doing environmental investigations.

11

Nurse
Follow Ups

1

Environmental
Investigation



RADON KITS

8

Kits
Sold

2

Not
Resulted

4

Above
Limit

2

Below
Limit

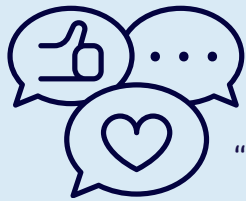
ENVIRONMENTAL HEALTH TOTAL SERVICES

Service Provided	Total Number
Food and Recreation Inspections	410
Complaints Reported/ Investigated	149
Rooming House Inspections	9
Animal Bite Follow-Ups	61

MATERNAL, CHILD AND FAMILY HEALTH

LACTATION SUPPORT PROGRAM

Our Lactation Support Services Program, provided by our Certified Lactation Counselor, uses evidence-based interventions for breastfeeding, promoting lifelong health. 32 initial consultations were completed in 2023. The program offers home visits to residents to ensure equity.



FEEDBACK FROM CLIENTS:

"Loved having the home appointment option and texting available!"

"I really appreciated being able to have a home visit! As a mom with 3 small children/babies, it's difficult to leave the house on my own."

Breastmilk Storage Guide

Storage Location	Fresh Milk	Thawed Milk
Room Temp	4 Hours	2 Hours
Refrigerator	4 Days	24 Hours
Freezer	6 Months - Best 12 Months - Okay	Never Refreeze

Baby didn't finish a bottle? Use within 2 hours
Based on the CDC & American Academy of Pediatrics
South Milwaukee/St. Francis Health Department
Lactation Support Services
414-768-8055

32
Initial
Lactation
Consultations

BREASTFEEDING BUSINESSES

Through the Maternal Child Health Grant, we partnered with The Bucyrus Club to assist them in becoming a breastfeeding friendly businesses. Their breastfeeding policy was updated and the physical space was specified.



VISION SCREENINGS

In partnership with the South Milwaukee Lions Club, 548 vision screenings were completed. Vision screening was also offered at St. Francis School Child Development Day.



OTHER SERVICES OFFERED

Other Maternal, Child, Family health services offered include:

- Hearing screenings that are completed at the various schools in South Milwaukee & St. Francis when requested
- Pack & Plays distributed for safe sleep efforts
- Review of birth reports and letters sent out to parents of new infants

10
Hearing
Screens
Performed

8
Pack & Play
Cribs
Distributed

ACCESS TO & LINKAGE WITH CARE



IMMUNIZATION CLINICS

Held our annual kids immunization clinics at Lakeview and Deer Creek schools where Influenza and Tdap vaccines were offered for free through a partnership with WI DHS Immunization Program for children 6 months-18 years old. Our staff dressed up as superheroes to help children be more relaxed when receiving their immunizations. Other items like shot blockers, weighted lap pads, and buzzy bees were used during clinics to provide pain relief and distraction. We used this clinic as a way of exercising our emergency preparedness point of dispensing plans for potential novel viruses or intentional biological releases.

582
Immunizations
Given

During our fall immunization campaigns, the health department offered home visits for those individuals who are considered homebound. Influenza and COVID-19 immunizations were provided.

When the 2023-2024 COVID-19 Booster was released the health department participated in the Federal Government's Bridge Access Program (BAP) to provide COVID-19 boosters to adults who were uninsured and the VFC program to provide COVID-19 to children who were on Badgercare, underinsured, or uninsured. The department also provided access to the COVID-19 booster to those 65 years and older.



BLOOD PRESSURE CLINICS IN THE COMMUNITY

476
Blood
Pressure
Screenings

Blood pressure clinics were held on a regular basis at the South Milwaukee Public Library, the St. Francis Public Library, various senior living communities, and the Grobschmidt Senior Center in order to provide community members with care they would not have received otherwise.

COMMUNITY HEALTH IMPROVEMENT PLAN

The current cycle of the South Milwaukee/St. Francis Community Health Improvement Plan (CHIP) runs from 2022-2025. In 2023, community work groups formed for each of the health priorities and met quarterly to plan for and provide updates on the outlined goals and objectives.

Health Priority #1: Substance Misuse



COMMUNITY NARCAN TRAINING

Narcan trainings were offered at numerous locations such as the public libraries, local churches, and schools. In addition, individual Narcan training was available anytime the Health Department was open. All who were trained received a box of Narcan. Hope kits are also given out that contain Fentanyl Test Strips

SCHOOL PREVENTION FOCUS GROUPS

One objective of the current CHIP is to understand programs in place, support implementation on best practices, and modify lessons as needed. To do this, focus groups were held with the REAL Academy, South Milwaukee Middle School, South Milwaukee High School, and St. Thomas More High School. Some examples of questions asked include but are not limited to: "Is substance use a problem and do you care? What type of education would you find the most beneficial for your learning style?". More focus groups will be held before the data can be analyzed and findings can be shared.

14
Quick
Response
Team Visits

QUICK RESPONSE TEAMS

The purpose of the Quick Response Team (QRT) is to promote community agency engagement to nonfatal overdose victims and provide information related to local resources for treatment, recovery, and offer Peer Support services. QRTs consist of a health department individual, a designated person from Police, and a Peer Support Specialist from Community Medical Services. Harm reduction tools are also offered. If contact is not made, information is left behind in a secure location.



COMMUNITY HEALTH IMPROVEMENT PLAN

Health Priority #2: Mental Health

QUESTION, PERSUADE, RESPOND (QPR) TRAINING

In 2023, there was an increase in deaths by suicide in the South Shore. To combat this, the South Milwaukee/St. Francis, Cudahy, Oak Creek, and Franklin Health Departments joined efforts to offer a Question, Persuade, Respond Training (QPR) in the month of September. This training focuses on the three steps that anyone can learn to help prevent suicide.



988 MAGNETS

To spread the word about the 988 Suicide & Crisis Lifeline, health department staff completed outreach to local businesses to place 988 magnets in their bathrooms.

MENTAL HEALTH PROJECT



233

Mental Health
Gardening Kits
Distributed



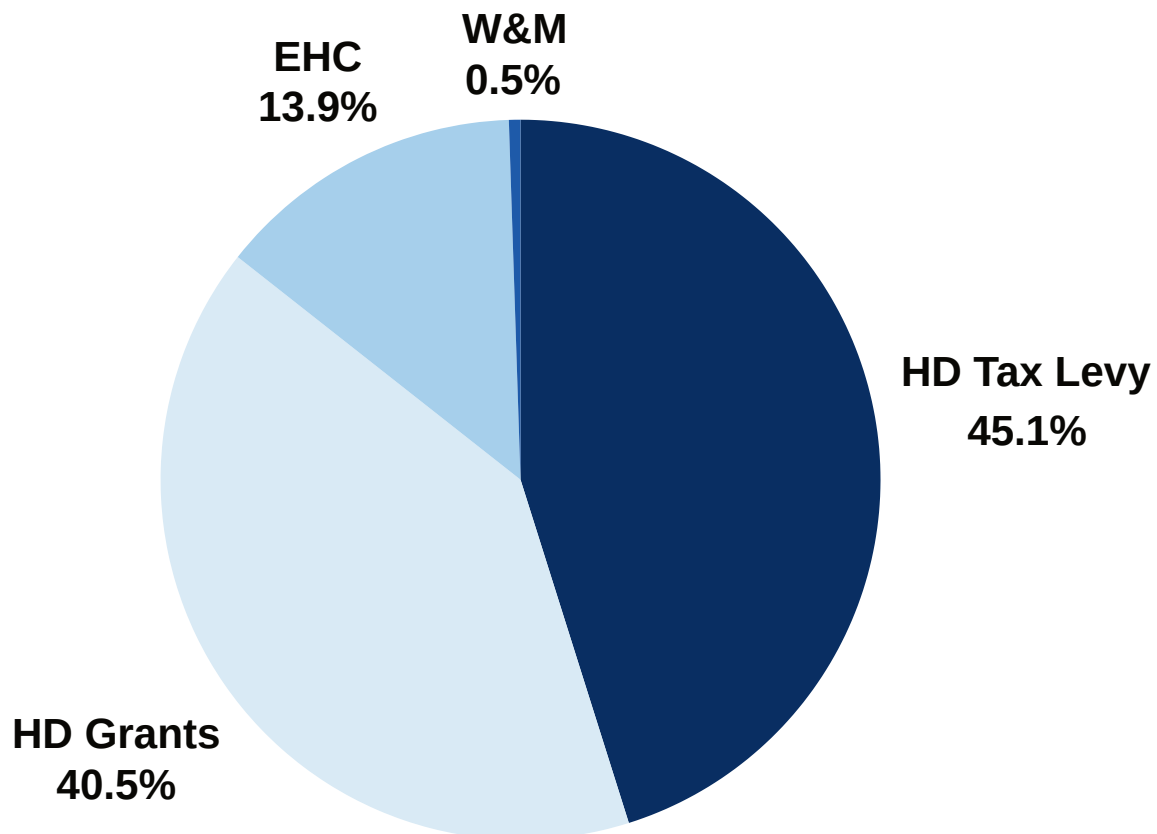
During Mental Health Month (May), the department used a Milwaukee County Community Development Block Grant to develop a program called “Finding Happiness Digging in the Dirt.” This program focused on mental health awareness, signs/symptoms of mental illness, and how to use various relaxation techniques. Attendees received a gardening kit containing a gardening book (child/adult), mental health resources, lettuce seeds, and a planting bag. This program was presented at:

- Children’s storytime at South Milwaukee Library & St. Francis Library where our nurse was a guest reader for the day
- The Bucyrus Commons grand opening event in South Milwaukee

DEPARTMENT BUDGET

The health department is funded by three sources:

- Licensing and clinical fees
- Tax levy funds from the city
- Grants from various sources that are allocated to specific programs



	Expenditures
Health Department Tax Levy	\$540,786
Health Department Grants	\$485,003
Environmental Health Consortium	\$166,149
City Sealer Weights & Measures	\$6,202

****Disclaimer:** figures may change as the audit and final review of accounts for 2023 were not completed prior to the publishing of this report.**

HEALTH DEPARTMENT TEAM

HEALTH DEPARTMENT TEAM

Jacqueline Ove - Public Health Administrator / Health Officer
Dr. Sandra Scalzitti - Medical Advisor
Mary Kosterman - Public Health Nurse Supervisor
Kailyn Dorniak - Public Health Nurse/ Certified Lactation Counselor
Melissa Ellis - Public Health Nurse
Sam Osmann - Public Health Specialist
Brianna Campbell - Zone E Preparedness Coordinator
Deborah Guthrie - Health Clerk
Laurie Strube - Public Health Technician
Jacklyn Morales - Environmental Health Specialist
Martin Zabkowicz - Inspector/City Sealer
Carina Marshall - Health Clerk

Departures

Taylor Wey - Public Health Nurse (March 2023)
Cassandra Johnson - Public Health Technician (April 2023)



BOARD OF HEALTH

Cyndi Kieck - Chairperson
Cassandra Hadley - Vice Chairperson
Jerome Bzdawka
Vickie Dominiski
Dr. Adam Sadik
Peggy Clark - Alderperson South Milwaukee
Matt Damon - Alderperson St. Francis

CONTACT US



QUESTIONS AND INFORMATION



Phone Number

+1 (414) 768-8055



Email Address

health@smwi.org



Website

[https://www.southmilwaukee.gov/
181/Health-Department](https://www.southmilwaukee.gov/181/Health-Department)



Social Media

[https://www.facebook.com/southmilwaukee
st.francishealthdepartment](https://www.facebook.com/southmilwaukee
st.francishealthdepartment)



Office Address

2424 15th Avenue,
South Milwaukee, WI 53172